

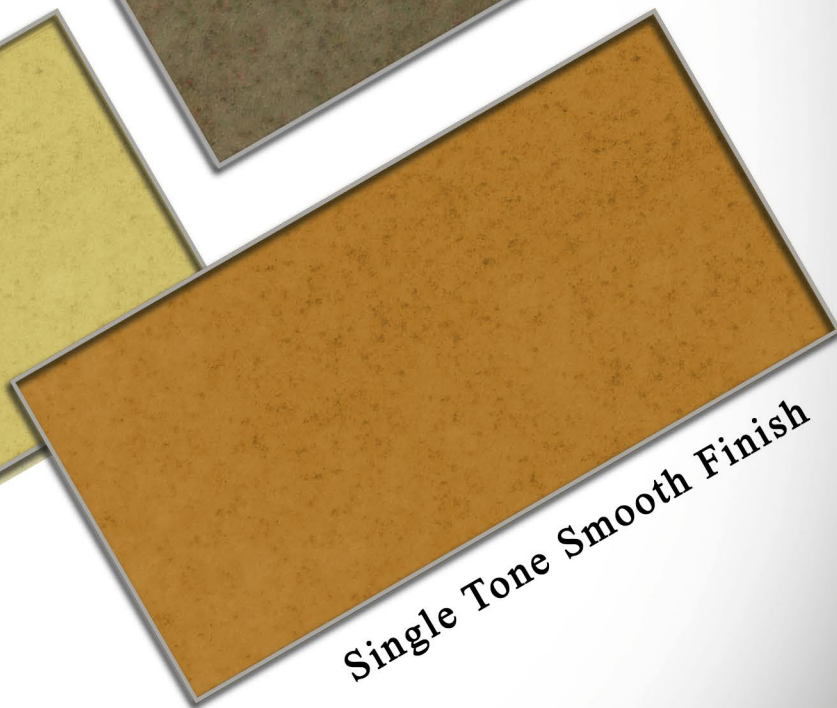
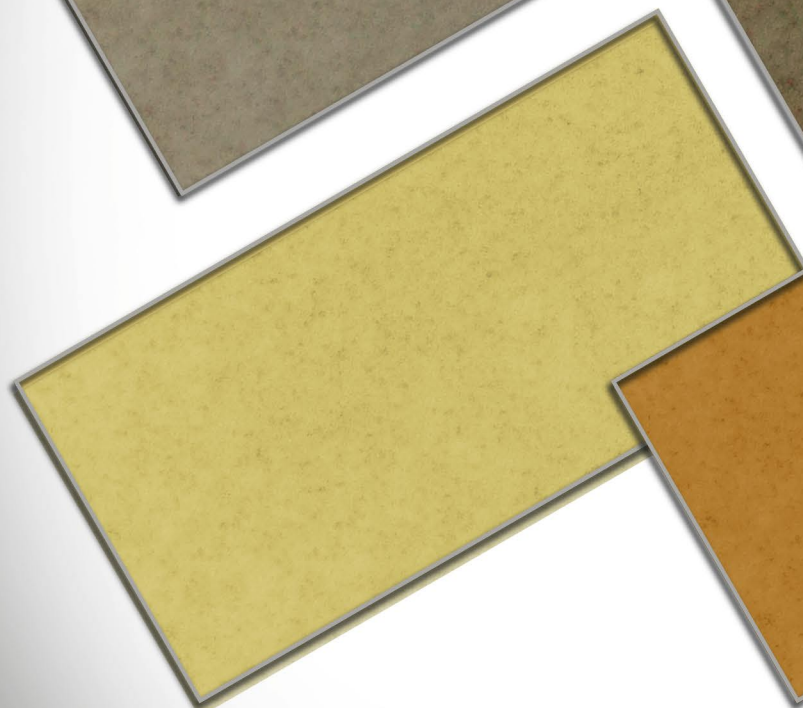
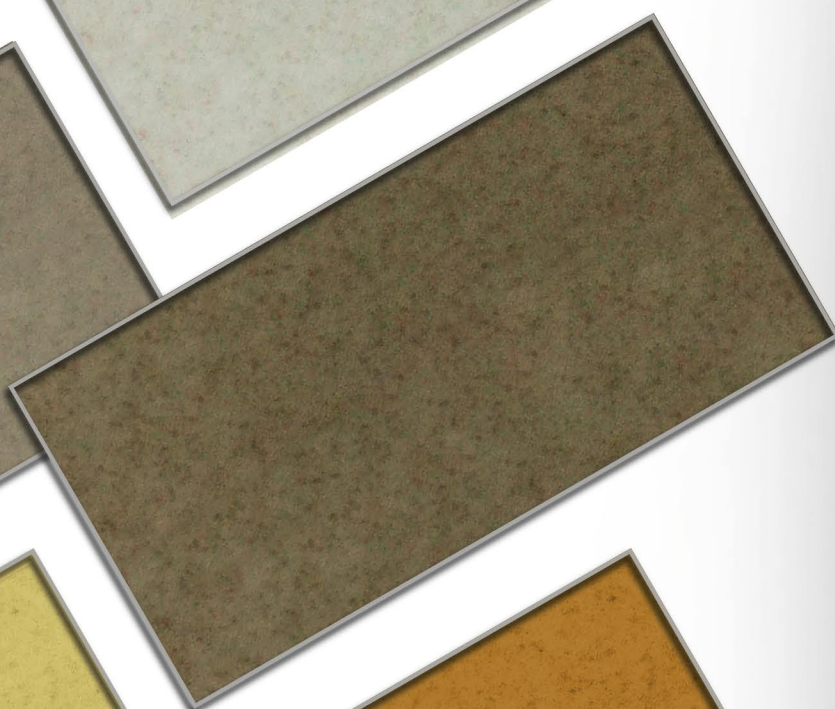
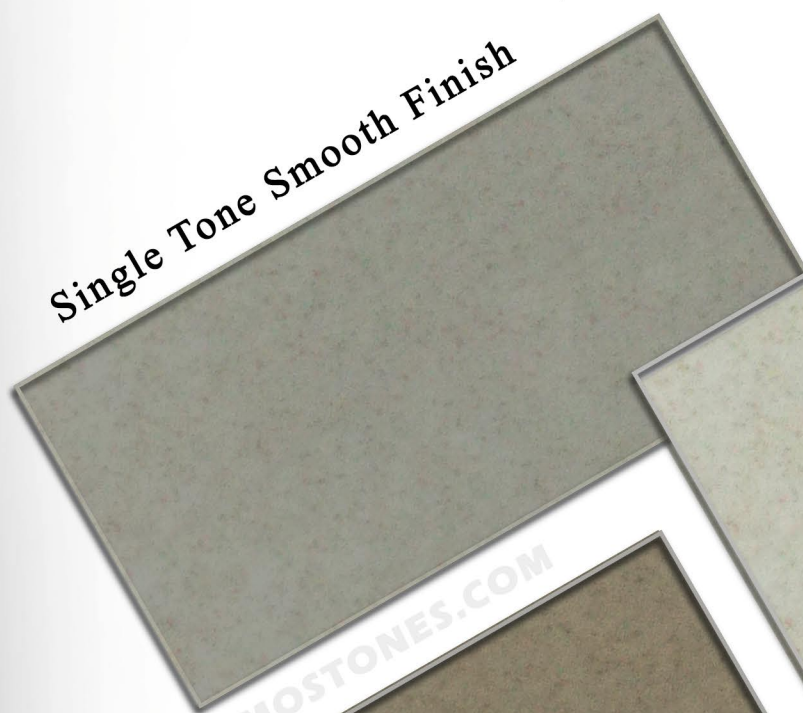


CARBOGRANI

NATURAL STONE TEXTURED COATINGS

(SPRAY APPLIED)

Single Tone Smooth Finish



Single Tone Smooth Finish

WWW.THERMOSTONES.COM

Product description	Water based high build acrylic resin textured body coat incorporating, Natural Granite, Ceramic & Marble chips
Used on projects like	Commercial & Residential towers, Hotels & Shopping Malls, Airports & Health Centers, Luxury Villas, etc.
Area of Application	Primed surface of Plaster, Concrete, Masonary Surfaces, Mortar, Hard and Soft Wood, Gypsum plaster board, Metal surfaces etc.
Product Features	<ul style="list-style-type: none"> • Very economical and easy application when compared to fixing of Granite claddings or GRP claddings. • Good aesthetic value and durable as real granite. • Excellent color retention due to natural granite chips. • Scratch and Abrasion Resistance. • Looks like natural flamed granite finish. • Very light in weight and good adhesion on the surface for many No. of years. • Wide range of colors, both single and double color finish. • Water, UV, Dust and Fungal resistance when combined with our range of Clear top coats for different climatic regions. • Easy Horizontal & Vertical Groove design With our Double sided tape.
Color Range	As seen in Catalogue, if any other color required special request to be made along with the color samples.

NOTE: Always stir the product after opening the can and use the can fully once opened.

TECHNICAL DATA :

Film Thickness	Depending on the surface condition and colour choice.
Drying Time	Surface Dry 2 hrs (@30°C) Hard Dry 24hrs
Solid Content	75% +/- 3%
Viscosity	380 +/- 75ps/30°C
Shelf Life	Minimum 6 months if stored in tightly sealed containers.

APPLICATION & METHOD STATEMENT FOR STONE TEXTURED COATINGS

1st Step: SURFACE CONDITIONS

- Check the surface to receive the coating is free of dust, oil and other residues.
- Check If there is any hairline cracks or visible joints.
- Check if there is any undulation more than the accepted standard.
- Check that the scaffolding is minimum 30 cms off the wall to receive coatings.
- Check that there Is no dampness or salt residue on the surface to receive coatings.
- Check and make sure proper covering is there around the building to receive coatings.

2nd Step : PREPARATION OF THE SURFACE

- If any remarkable dirt mentioned above is seen then it should be washed with High Jet cold wash and the surface is let to dry for 96 hrs (If surface temp. is 30°C)
- If any hairline cracks, then It should be repaired by our silicate based fillers.
- If any crack more than 2- 5mm , then it should be repaired by our elastic cementitious fillers.
- If the undulation is more than the standard acceptable, then create groove design effect to minimise the effect of undulation.
- Always make sure that the scaffolding is minimum 30 cms from the surface to receive coating.

3rd Step : RP UNDERCOAT SEALER

- Apply "RP Undercoat Sealer" as per the requirement mentioned in our product literature.
- Allow the Undercoat Sealer to dry for 24 hrs before the application of Stone Textured coatings
- As the Undercoat Sealer is specially formulated for Stone Textured Coating, no other under coat should be used other than "RP Undercoat Sealer."

4th Step : FIXING OF DOUBLE SIDED TAPE

- This step needs to be followed only if there is any horizontal or vertical groove designing in the Stone Textured Coating.
- Mark the groove line as per the design and fix our double sided tape on the marked lines.
- Make sure that the first layer of Double Sided Tape is removed immediately after the application of the second coat of Stone Textured Coating.
- The Second layer of the Double Sided Tape, should be removed after 24 hours of drying of the second coat of the Stone Textured Coating.

5th step : FIRST COAT OF GRANISTONE / CARBOGRANI TEXTURED COATING

- Apply with a Hopper Spray gun with nozzle size range of 3 mm up to 7 mm (Depending on the texture design required)
- The first coat of Granistone / Carbograni is called as base coat, it can be applied in mist form or can be fully covered, depending on the plaster conditions.
- Always build thickness on the Second coat.

6th Step: SECOND COAT OF GRANISTONE / CARBOGRANI TEXTURED COATING

- Apply with a Hopper Spray gun with nozzle size range of 3 mm up to 7 mm (Depending on the texture design required)
- Apply the Second coat of Granistone / Carbograni on the Mist coat.
- Surface is to be fully covered by the second coat and no patches of under coat to be seen.
- While applying the second coat always make sure that the Air pressure is constant.
- If there is too much wind then spray works should be stopped

7th Step : ROYAL CLEAR GLAZE (Matt / Gloss finish)

- To be applied after minimum 24 hours of drying of the second coat of Granistone / Carbograni.
- If any groove stickers, it is to be removed before the application of the Clear Glaze.
- Apply by spray or roller the Royal Clear Glaze

NOTE: Always stir the product after opening the can and use the can fully once opened.

APPLICATION GUIDELINES:

Surface Conditions	There should be no dirt, dust, oil , grease and foreign matters on the surface. The surface should be completely dry and all hair line crack to be filled with our fillers.
Coverage	4 to 5 m ² minimum depending on the surface condition and Color choice
Dilution	0 - 5 % with clean water, if required.
Coating Intervals	Minimum 30 minutes after the base coat is applied, the 2nd coat should be applied.
Clear Coat	After 2nd Coat of Stone finish paint apply any of our range of clear coats depending upon the site locations and the climatic conditions of the country.

PRECAUTIONS TO BE TAKEN :

- 1) Always wear mask during application .
- 2) Store the material in a place having sufficient ventilation and make sure it is not exposed to sunlight for a long lime.
- 3) Any skin or eye contamination should be washed immediately with plenty of water.
- 4) If by mistake it is swallowed, seek medical advice immediately. Do not induce vomiting.
- 5) It is inflammable but better to avoid from heat sources as it may harden the product.
- 6) Always make sure there is adequate ventilation during application.

TECHNICAL SPECIFICATION

Granite like stone having a base of acrylic resin mixed with ceramic, granite, & marble chips.
It Is to be sprayed by Hopper Spray Gun to give a effect of Stone like textured coatings.

NO	TESTED ITEMS	TEST EQUIVALENCY	TEST METHOD / CRITERION AND RESULT
1	Natural Stone Aggregates	TS/001/QS	The natural stone aggregates when washed with Water or 30% Hydrochloric acid or General Purpose Thinner, their should be no bleeding of color from the stone aggregates.
2	Base	TS/005/QS	Acrylic Resins
3	Adhesive Strength	JIS A 6910 5.8.2	Test after curing for 14 days (The test result shall not be less than 12.0 kgf / cm ²)
4	Adhesive Strength after Immersion in water	JIS A 6910 5.8.3	Immersion in water for 10 days @ 30°C, followed by curing for 24 hrs. Test- The test result shall not be less than 8.0kgf/cm ²
5	Impact Resistance	JIS A 6910 5.11	Drop a spherical weight of 700 g from height of 30 em into the surface of specimen. There shall be no cracking or Dis-colouration or peeling of the specimen.
6	Resistance to Repeated Warming and Cooling	JIS A 6910 5.9	Immersion in water at 20°C for 18 hrs ,followed by freezing at -5°C for 3 hrs, followed by exposure to sunlight at 40°C for 8 Hrs X 4 days repetition. Observation .. There shall be no Peeling, Cracking. Blistering Dis-colouration and Oegradation of the luster on the specimen.
7	Water Permeability	JIS A 6910 5.10	Calculate the value based on the increment of water head inside a measuring pipette. There shall not be more than 0.5 ml.
8	Stability at low Temperature	JIS A 6910 5.5	(-5°C x 18 hrs, - curing hrs.) x 3 - Visual inspection on stirring the material. There shall be no lump and separation and Concentration of material.
9	Resistance to surface	JIS A 6910 5.7	Leave wet sample at wind speed at 3m/sec. 20°C, There shall be no crack on the Specimen.
10	Weather Resistance	JIS A 6910 5.12	Using the grey scale compare and inspect the specimen which Only indicated for 250 hrs by the sunshine Arc lamp (type W.S). There shall be no cracking & peeling. The discoloration shall not be less than grey scale No.3

THERMO STONE FZE,
PO Box:41838,
Sharjah Hamriyah Free Zone,
Tel : ++971 65260646,
E mail : info@thermostones.com

Note :

The above technical information / values are given to the best of our knowledge based in our in-house laboratory tests carried out as per the International standard and our practical experience. However due to different applications, site conditions, surface strength and constraints which are beyond our control, we are not liable for any circumstances, due to or relating to the application or usage of our product. We serve the right to alter or modify any data given without any prior notice, therefore it is best to contact us should you have any doubts or enquiries